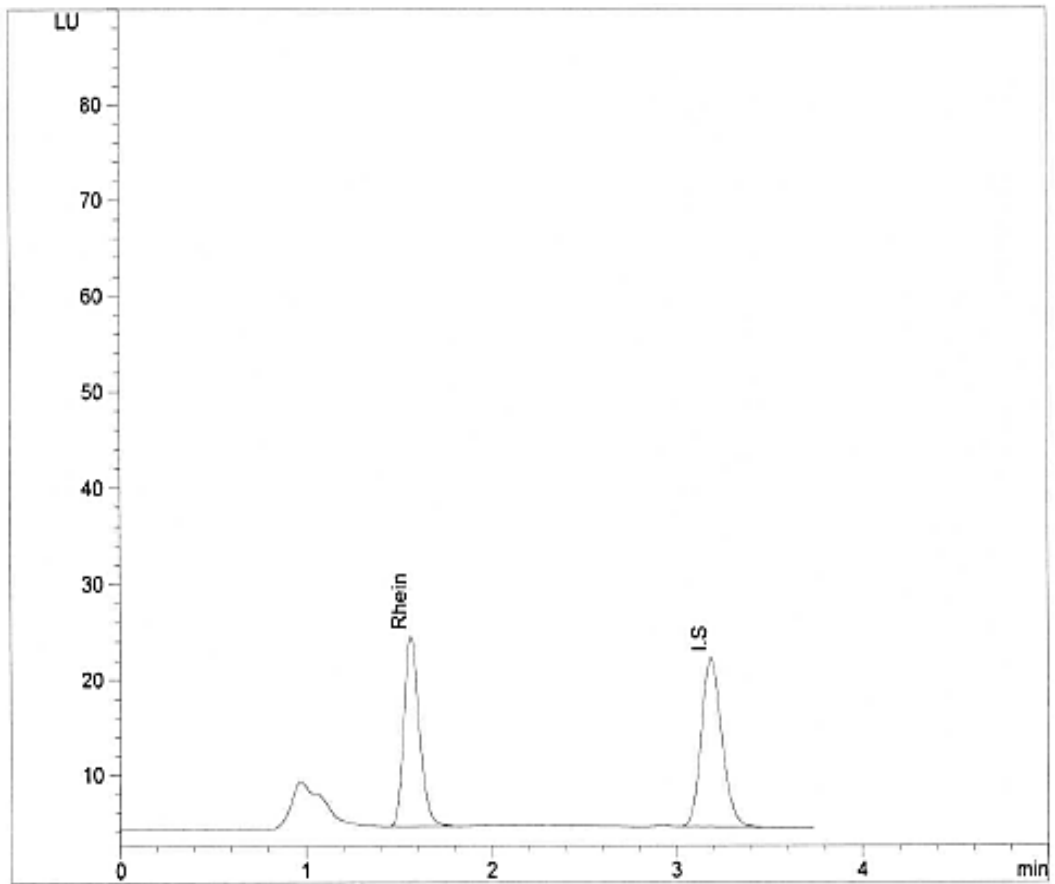


An example of the obtained chromatogram can be seen in figure 13.



=====
 Customized Report:HPLC LAB
 =====

Peak #	RT [min]	Name of Compound	Main Peak Height	Main Peak Area	Amount (ng/ml)
1	1.6	Rhein	19.993	114.609	2506.783
2	3.2	I.S	17.782	136.420	1.000

Figure 13: Chromatogram of subject 6 at time point 0.75 hr